

EverExceed[®]
power your applications



ESC SERIES INVERTER/CHARGER

Pure sine wave inverter

ESC series inverter/charger

Pure sine wave inverter

ESC series pure sine wave inverter with AC charger is a multifunctional converting technology. It adopts the most advanced PWM control technology, and it has a lot of characteristics such as: precise control, security, efficiency, good reliability. This type inverter can supply electricity power to families, marketplace and so on. It's have the function of perfect intellectualized protection. The inverter researched and developed by ourselves with many highly technologies and intellectualized electrical components, which could debates the fussy control and protection made by apart components and improve the reliability of inverters as well as make the operation more convenient.



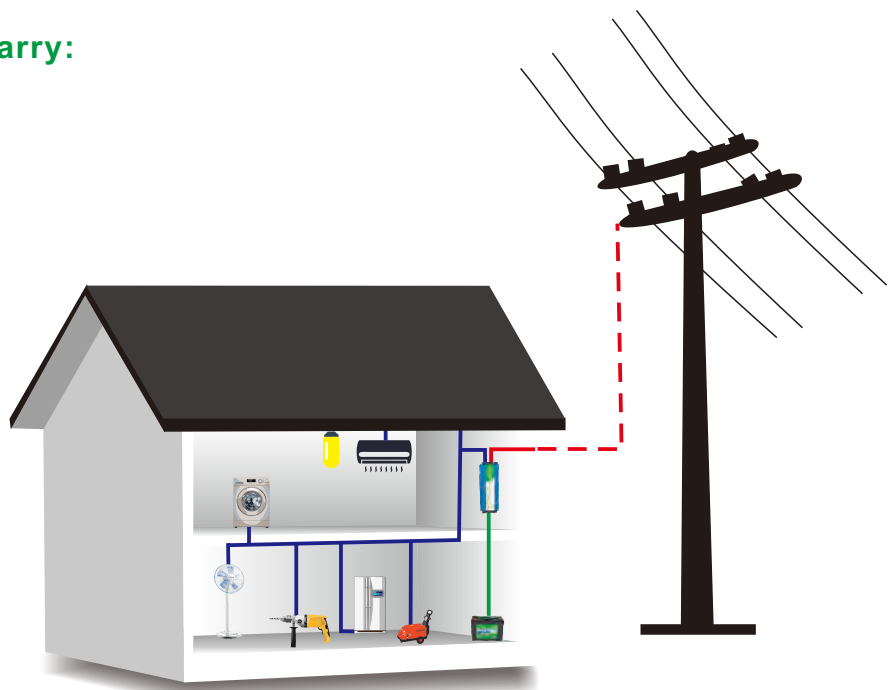
Features

- Over voltage shutdown
- Over load protect/Low voltage alarm and shutdown
- Short-circuit protect
- Over heat protect
- Advanced heat sink design and optimum component layout
- Standard AC outlet
- LED red/green indicator

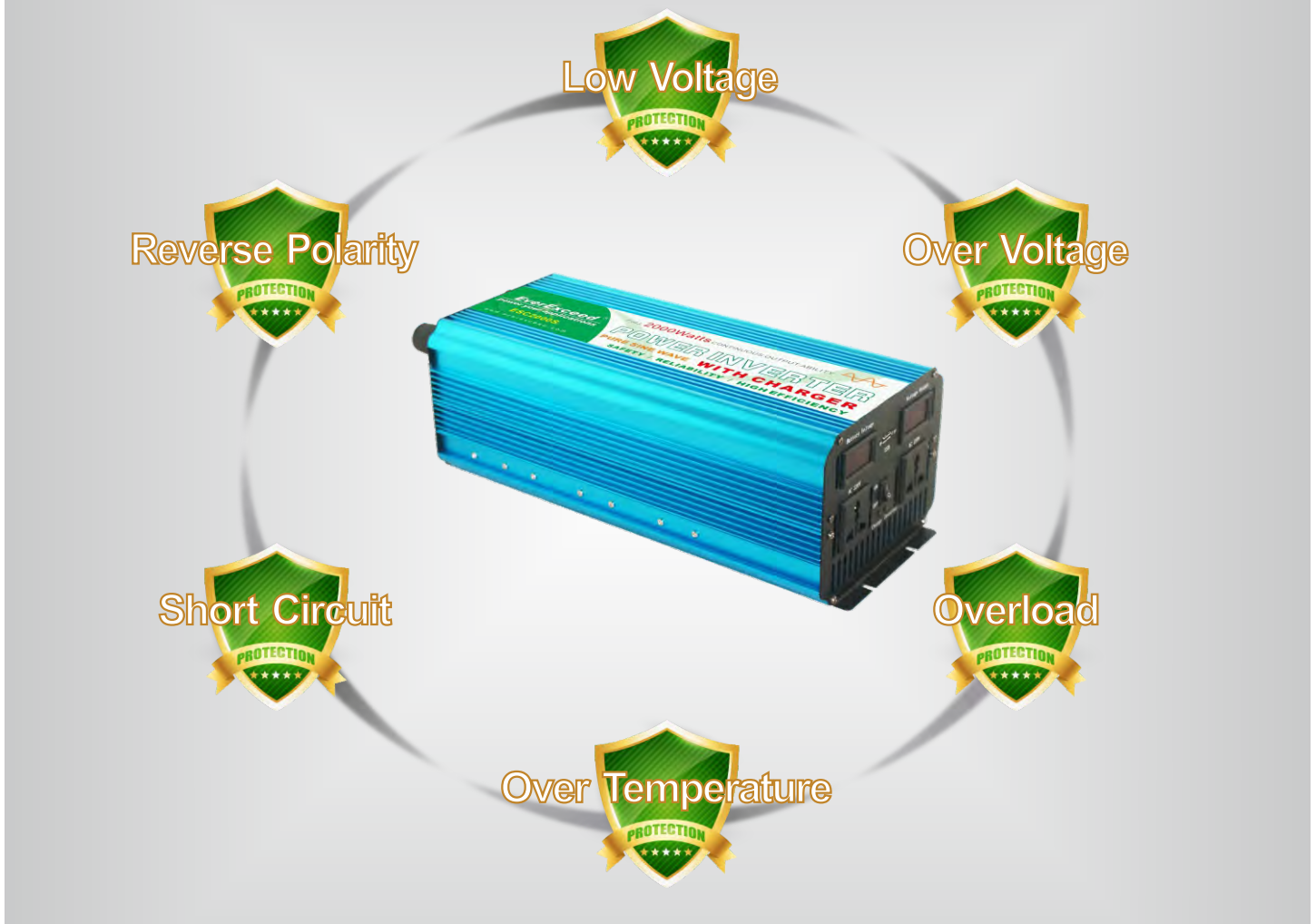


Our ESC inverters are able to carry:

- Air conditioning
- Washing machine
- Cleaning machine
- Electric drill
- Recreational machines
- Incandescent
- Led lights
- Notebook computer
- Fans



Protect function



Low Voltage Protection

Function: Automatically protect when be in low voltage: first alarm, then the voltage continuously reduce. LED red on, and the machine shuts down.

Short Circuit Protection

Function: Automatically self protect when short circuit: LED red on.

Over Temperature Protection

Function: It can automatically self protect when at high temperature: LED red on, and the machine shuts down.

Over load Protection

Function: Automatically self protect when load too much power: LED red on, the machine auto.

Reverse Polarity Protection

Features: Automatically protect when positive and negative cables are reverse connected: fuse burns automatically shuts down.

Over Voltage Protection

Function: Automatically protect when be in high voltage: LED red on, the machine automatically shuts down.

Connection Diagram

12VDC Inverter Connection



24VDC Inverter Connection



Note: 48VDC Inverter are connected in similar ways.

| MODEL | ESC300S | ESC800S | ESC1000S | ESC1500S | ESC2000S | ESC3000S | ESC5000S |
|-----------------------------------|------------|-------------|-------------|--|-------------|-------------|-------------|
| Rated Power | 300W | 800W | 1000W | 1500W | 2000W | 3000W | 5000W |
| Peak (surge) Power | 600W | 1600W | 2000W | 3000W | 4000W | 6000W | 10000W |
| DC INPUT | | | | | | | |
| DC Input Voltage(optional) | 12V | | | 12/24V | | | 24V |
| Voltage Range | 10~15V | | | 10~15V(12V)/ 20~30V(24V) | | | 20~30V |
| Input Over voltage shutdown | 15.5±0.5V | | | 15.5±0.5V(12V) / 30±1V(24V) | | | 30±1V |
| Input Under Voltage alarm | 10.5±0.5V | | | 10.5±0.5V(12V) / 20±1V(24V) | | | 20±1V |
| Input Under Voltage shutdown | 9.5±0.5V | | | 9.5±0.5V(12V) / 19±1V(24V) | | | 19±1V |
| No load current (A) | ≤0.6 | ≤1.0/0.5 | | ≤1.8/1.0 | ≤3.0/1.5 | ≤3.8/2.0 | ≤2.5 |
| AC OUTPUT | | | | | | | |
| Output Voltage | | | | 110/220VAC±5% | | | |
| Output Frequency | | | | 50/60±0.5Hz | | | |
| Output waveform | | | | Pure sine wave(THD<3%) | | | |
| Charging input | | | | | | | |
| Rated voltage | | | | 110/220Vac | | | |
| Rated frequency | | | | 50/60±0.5Hz | | | |
| Full of efficiency | | | | ≥80% | | | |
| Surge protection | | | | Varistor | | | |
| Charging output | | | | | | | |
| Constant current | | | | 15A(12V)/8A(24V) The charging indicator is orange | | | |
| Constant pressure voltage | | | | 14.4V(12V)/28.8V(24V) The charging indicator is orange | | | |
| Float charging voltage | | | | 13.5V(12V)/27V(24V) The charging indicator is green | | | |
| SYSTEM | | | | | | | |
| operation model | | | | Grid priority | | | |
| Conversions time | | | | The municipal electricity is converted to contravariant ≤ 20ms | | | |
| | | | | The inverse transform into amunicipal electricity ≤ 20ms | | | |
| Max Efficiency | | | | ≥90% | | | |
| Cooling Fan | | | | Yes (with intelligent fan) | | | |
| Connection | | | | DC input terminal/AC output socket | | | |
| Over temperature alarm & shutdown | | | | 75℃ | | | |
| Temperature | | | | 0~45℃(operation)/0~60℃(storage) | | | |
| Dimension (W*D*H) (mm) | 361*150*76 | 309*180*142 | 309*180*142 | 309*180*142 | 454*180*142 | 529*180*142 | 685*180*167 |
| Weight (KG) | 2.07 | 4.26 | 4.26 | 4.26 | 4.90 | 8.10 | 9.70 |

NOTES: Other power rating can customize by customer requirement



***Supplied Worldwide by
EverExceed Corporation***

